

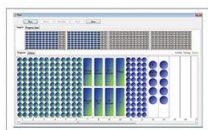
# Automatic ELISA Processor BIOBASE2000



mail: export@biobase.com  
www.biobase.cc / www.biobase.com

### Features:

- ①. 1 robotic arm, 2 pipetting probes (10~1000µl).
- ②. 4 unit 96 well microplates (independent incubating).
- ③. 1 unit reader& washer (auto reading and washing).



**Software Module**  
User-friendly Windows system;  
LIS system available.



**Sample Module**  
Hitech teflon coating probe to  
prevent cross contamination.



**Sample & Reagent & Dilution Rack Module**  
Original sample tubes available;  
Rack positions programmable.



**Microplate Reader & Washer Module**  
Modularized automatic control  
reading and washing system.

### Parameters:

Model	BIOBASE2000	
Sample Unit	Sample Racks	Standard 192 sample positions (expandable, up to 552)
	Pipetting	10~1000µl
	Dispensing System	2 aspirating and dispensing probe (X-Y-Z movement)
Reagent Unit	Reagent Position	23 reagent racks, editable
	Pipetting Range	10~1000µl, 1µl stepping
	Pipetting Precision	(100µl)CV≤0.5%
Washing Unit	Dispensing Time	4 minutes to whole 96 well microplates
	Washing Probes	Two line 8-nozzle manifolds
	Wash Containers	Cleaning fluid (15L), waste water (25L), Buffer 1 (5L), Buffer 2 (2L), Buffer 3 (2L), Buffer 4 (2L), with liquid level-sensing, liquid shortage and full alarm
	Waste Containers	25L with waste full sensor
	Washing Residual	< 2µl
Reading Unit	Reading Channels	8 independent photometric channels, mono and dichromatic reading
	Absorbance	0.0~3.0 OD
	Spectral Range	400~700nm
	Optical Filters	2 standard filters (450,630nm); 2 more on request (405nm/450nm/492nm/630nm)
Incubation Unit	Reading Accuracy	±1% from 0~1.5OD, ±2% from 1.5~3.0 OD
	Incubators	4 independent units
	Temperature Range	RT to 45°C
Data Management	Temperature Accuracy	±0.5°C
	Software System	Above Windows 7 system
	LIS System	Bi-direction, support HL7 protocol
Working Conditions	Results	Absorbance and results reviewable by software
	Printer	External optional
	Power Supply	AC220V±10% 50/60Hz; 110V±10% 60Hz, 400W
Size & Weight	Temperature	10~30°C
	Humidity	30%~80%
	External Size(W*D*H)	1235*705*875mm
Size & Weight	Net Weight	146kg
	Package Size(W*D*H)	1380*860*1435mm
	Gross Weight	220kg